

QCon^{Lite}

USB-MIDI Controller Station

MIDI/Audio control surface with motorized faders for production



<div style="text-align: center; background-color: black; color: white; padding: 5px; font-weight: bold;">CAUTION</div> <div style="display: flex; justify-content: space-around; align-items: center;"> <div style="text-align: center;"> <p>RISK OF ELECTRIC SHOCK DO NOT OPEN RISQUE DE CHOC ELECTRIQUE NE PAS OUVRIR</p> </div> </div> <p style="font-size: small; text-align: center;">CAUTION: TO REDUCE THE RISK OF ELECTRIC SHOCK DO NOT REMOVE COVER (OR BACK) NO USER-SERVICEABLE PARTS INSIDE REFER SERVICING TO QUALIFIED PERSONNEL</p> <p style="font-size: x-small; text-align: center;">ATTENTION: POUR EVITER LES RISQUES DE CHOC ELECTRIQUE: NE PAS ENLEVER LE COUVERCLE, AUCUN ENTRETIEN DE PIECES INTERIEURES PAR L'USAGER. CONFIER L'ENTRETIEN AU PERSONNEL QUALIFIE. AVIS: POUR EVITER LES RISQUES D'INCENDIE OU D'ELECTROCUTION, N'EXPOSEZ PAS CET ARTICLE A LA PLUIE, OU A L'HUMIDITE</p>	<div style="display: flex; justify-content: space-around; align-items: center;"> <div style="font-size: x-small;"> <p>The lightning flash with arrowhead symbol within an equilateral triangle is intended to alert the user to the presence of uninsulated dangerous voltage within the product's enclosure, that may be of sufficient magnitude to electric shock to persons. Le symbol clair avec point de flèche à l'intérieur d'un triangle équilatéral est utilisé pour alerter l'utilisateur de la présence à l'intérieur du coffret de voltage dangereux non isolé d'ampleur suffisante.</p> </div> </div> <div style="font-size: x-small;"> <p>exclamation point within an equilateral triangle is intended to alert the user of the presence of important operating and maintenance (servicing) instructions in the literature accompanying the appliance. Le point d'exclamation à l'intérieur d'un triangle équilatéral est employé pour alerter les utilisateurs de la présence d'instructions importantes pour le fonctionnement et l'entretien (service) dans le livret d'instruction accompagnant l'appareil.</p> </div>
---	--

Important Safety Instructions

1. Read this manual thoroughly before using this unit.
2. Keep this manual for future reference.
3. Take notice of and comply with all warnings included in the user's manual or indicated on the appliance.
4. Follow all instructions included in this manual.
5. Do not expose this unit to rain or moisture. Avoid having water or other liquids spilled on this unit.
6. When cleaning the cabinet or other parts of this appliance, use only a dry or slightly damp soft cloth.
7. Do not block any ventilation openings or interfere with the proper ventilation of this unit. Install in accordance with the manufacturer's instructions.
8. Do not use or store near any heat sources such as radiators, heat registers, stoves, or other heat-producing appliances.
9. Do not interfere with the safety purpose of the polarized or grounding-type plug. A polarized plug has two blades with one wider than the other. A grounding-type plug has two blades and a third grounding prong. These are designated for your safety. If the provided plug does not fit into your outlet, consult an electrician.
10. Protect the power cord from being walked on or otherwise damaged by items placed on or against them. Particular attention should be given to the plugs, receptacles, and the point where the cord exits the appliance.
11. To avoid the risk of electrical shock, do not touch any exposed wiring while the unit is in operation.
12. Only use attachments/accessories specified by the manufacturer.
13. Unplug this unit and all connected electrical equipment during lightning storms or when left unused a long period of time.
14. Refer all servicing to qualified service personnel. Servicing is required when the appliance has been damaged in any way or fails to operate normally.

WARNING: To reduce the risk of fire or electric shock, do not expose this unit to rain or moisture

Contents

Introduction 1

 What's in the package 1

Features 2

Top Panel Layout 3-5

Side Panel Layout 5

Getting Started

 Connecting Your Qcon Lite Controller 6

Installing iMap™ Software for MAC OS X 7

Installing iMap™ Software for Windows 7-8

Assigning MIDI functions with iMap™ 9

iMap™ Qcon Lite software panel 9-10

Firmware upgrade 11

Restore the factory default settings 11

Connections 12

Specifications 13

Services 14



Introduction

Thank you for purchasing the ICON Qcon Lite Midi/Audio control surface. We sincerely trust this product will provide years of satisfactory service, but if anything is not to your complete satisfaction, we will endeavor to make things right.

In these pages, you'll find a detailed description of the features of the Qcon Lite, as well as a guided tour through its front and side panels, step-by-step instructions for its setup and use, and full specifications.

You'll also find a warranty card enclosed - please don't forget to fill it out and mail it so that you can receive online technical support at: www.icon-global.com. And so we can send you updated information about these and other ICON products in the future. As with most electronic devices, we strongly recommend you retain the original packaging. In the unlikely event the product must be returned for servicing, the original packaging (or reasonable equivalent) is required.

With proper care and adequate air circulation, your Qcon Lite will operate without any trouble for many years. We recommend that you record your serial number in the space provided below for future reference.

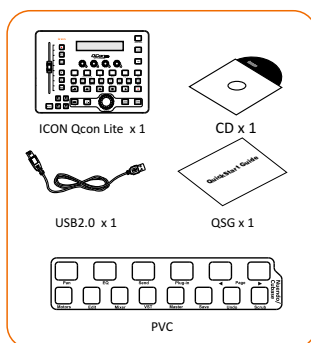
Please write your serial number here for future reference:

Purchased at:

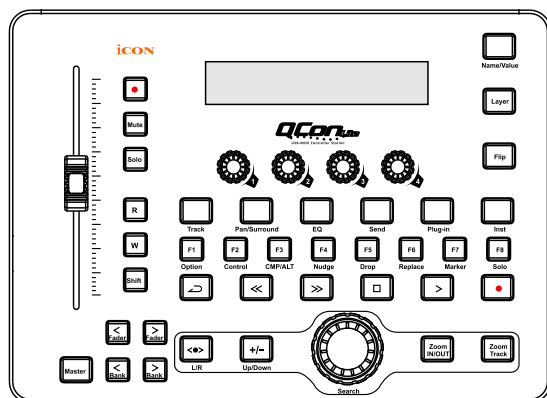
Date of purchase:

What's in the package?

- Qcon Lite USB-MIDI Controller x 1pc.
- Software CD / User' Manual x 1
- Quick Start Guide x 1
- USB2.0 Cable x 1
- PVC overlays for different DAWs



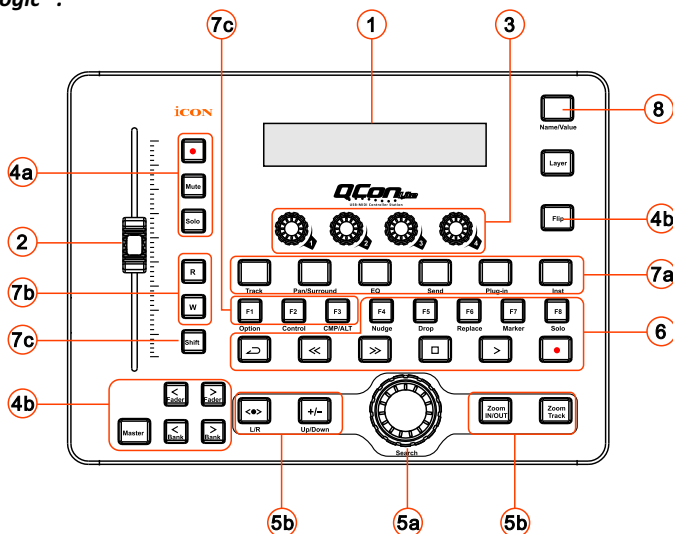
Features



- 1x100mm touch-sensitive motorised channel/master fader
- 4 x dual function encoder knobs (Enter & rotate)
- Large backlit LCD to display channel name, control values etc. for each channel
- Jog wheel shuttle for fast search and control
- Illuminated channel buttons including Rec-enable, Solo and Mute.
- 6 illuminated transport buttons including Play, Stop, Rec, Rewind, Fast forward and Loop
- 16 illuminated function buttons.
- 8 illuminated assignable MIDI function buttons (F1-F8)
- 2 illuminated “Fader” buttons for shifting the motorised fader to different channels
- 2 illuminated “Bank” buttons for shifting 8 channels up or down
- Extremely compact and designed to match the MacBook Pro™
- Class-compliant with Windows XP, Vista (32-bit), Windows 7 (32-bit & 64-bit), and Mac OS X (IntelMac)
- USB 2.0 high speed connectivity
- Mackie control build-in for Cubase, Nuendo, Samplitude, Logic Pro and Ableton Live.
- Mackie HUI protocol build-in for Pro Tool.
- User self-define mode (MIDI Learn) for other DAW such as Sonar.
- Firmware upgrade available simply via USB connection and iMap software.
- Template labels are included for difference popular DAW such as Cubase, Nuendo, Samplitude, Logic Pro and Ableton Live .
- USB bus-powered
- iMap™ software included for easy mapping of MIDI functions.
- Robust aluminum and metal casing with Kensington lock port

Top Panel Layout

Note: Function operates slightly difference between DAWs. Please refer to your DAW manual for each function and overlap the provided labeling template according to your current using DAW. The following description is based on the functions that operate in Apple Logic™.



① LCD backlit display

The four-line backlit LCD display shows the parameter values as you adjust them and also provides feedback about channel selections, operating modes, and more.

② Channel/Master faders

The touch sensitive motorised fader could be used to adjust the parameter of different channels. Press the two “Fader” shifting buttons to shift between channels. Also, by pressing the “Master” button, the fader will turn to control the parameter of the master channel.

Channel Fader

The 100mm motorised fader is generally used for controlling the track volume of your DAW. Depending on your DAW, you may use the “Flip” button to switch the function of these faders to change other settings. It is touch-sensitive to allow override automation the moment you touch a fader. Also, it is motorised; it will automatically move to reflect the current level of the selected channels in your DAW application. Any automation recorded in a project will be reflected by the fader positions. Any parameter adjustments made with these faders will be displayed directly above on the LCD display.

Master fader

It controls your DAW software’s master channel fader. Any parameter adjustments made with this fader will be displayed directly above on the LCD display.

③ Dual function encoders

The dual functioned encoder acting as a push-button and a rotary control. When an encoder is pressed, it may be used to change modes of operation or to change what appears in the display above the channel strips. When an encoder is rotated, depending on its assigned function, it can be used to adjust a channel's pan, send level, or plug-in parameters.

④ Control buttons

4a) Recording channel control buttons section

REC buttons - Activate and deactivate the recording state of the associated channel. The switch will light red when the channel is armed.

SOLO buttons - Turn On and Off the solo state of the associated channel. The switch will light green when the channel solo state is on and other channels will be muted.

MUTE buttons - Activate and deactivate the mute state of the associated channel. The switch will light blue when the channel is muted.

4b) Motorized fader control buttons section

FLIP button - Press the FLIP button to swap the parameter settings of the motorized fader and the rotary encoder knobs.

Fader < button - Shift "one" channel up for the fader.

Fader > button - Shift "one" channel down for the fader.

BANK UP button - Shift "eight" channels up for all faders (except the master channel).

BANK DOWN button - Shift "eight" channels down for all faders (except the master channel).

⑤ Jog wheel section

5a) **Jog wheel** - The jog wheel is used for various purposes specific to the DAW application, including shuttle and scrubbing functions.

5b) Zoom control buttons section

Zoom UP/DOWN button - The Zoom UP/Down button is used to navigate up or down through the Graphical User Interface (GUI) of the DAW application.

Zoom LEFT/RIGHT button - The LEFT/RIGHT button is used to navigate left or right through the Graphical User Interface (GUI) of the DAW application.

Zoom IN/OUT button - Zoom in or out the track horizontally.

Zoom Track - Zoom in or out the track vertically.

⑥ Transport control buttons section

PLAY button - Activate the play function of the DAW.

STOP button - Activate the stop function of the DAW.

REC button - Activate the record function of the DAW.

REWIND button - Activate the rewind function of the DAW.

FAST FORWARD button - Activate the fast forward function of the DAW.

LOOP button - Activate the loop function of the DAW.

Marker button - Toggle small Marker mode.

Nudge - Toggle small Nudge mode.

Drop - Toggle Drop.

Replace - Toggle Replace.

Solo - Toggle track solo (of selected track).

⑦ Sub-control buttons

This section of control buttons varies in different DAWs. Qcon Lite is based on Logic™ for the settings.

(Note: For different DAWs the labeling may not be perfectly matched.)

7a) Assignment section

TRACK button -Activate the track parameters of the software

PAN/SURROUND/EQ/Send/Plug-in/Instrument buttons -These buttons are used to activate the corresponding effect function of the DAW. They are typically used in conjunction with the rotary encoder knobs. Press the button, its light will turn on, and then rotate the rotary encoder knob to adjust the value, which will display on the LCD directly above.

7b) Automation section

READ button -Press the READ button to activate the read function of the current audio track.

WRITE button -Press the WRITE button to activate the write function of the current audio track.

7c) Modifiers-While Held Down section

SHIFT button - Switch to second function.

OPTION button - Apply function to all tracks or set parameter to minimum/maximum.

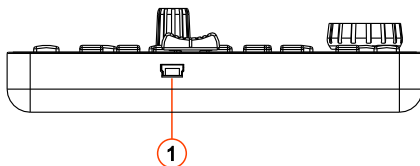
CONTROL button - Engage Group Clutch while held down.

CMD/ALT - Enable fine mode; shift parameter page by 1 parameter instead of page.

⑧ Display Parameters button section

NAME/VALUE button - Toggle between parameter name and parameter value display.

Side Panel Layout



① USB port (B-Type)

Functions as a MIDI port to your notebook (or computer) and compatible software. Also provides power to your Qcon Lite.

Getting Started

Connecting Your Qcon Lite Controller

① Connect the Qcon Lite to your Mac/PC via the USB port.

Choose a USB port on your Mac/PC and insert the wide (flat) end of the USB cable. Connect the cable's other end to the Qcon Lite. Your Mac/PC should automatically “detect” the new hardware and notify you that it is ready to use.

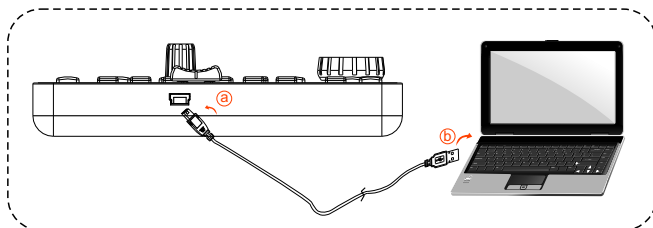


Diagram 1



Diagram 2

② Mode select & assign the MIDI messages to Qcon Lite

Select Mackie Control or HUI mode from the pull down menu for pre-mapped MIDI mapping.

Select User Defined mode for self MIDI assignment. Refer to page.9 for “Assign the MIDI messages with “iMap™” software.

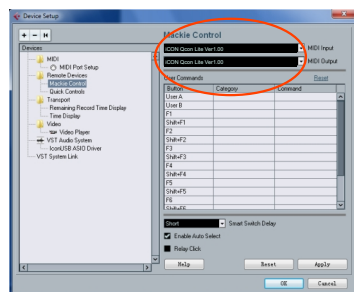
Tip: Make sure you have selected the correct DAW mode in the pull down menu

③ Setup your DAW

Activate the ICON Qcon Lite controller in your DAW or MIDI software using “MIDI Setup” or “MIDI Devices”.

For Logic™, Cubase™ and Nuendo™, choose Mackie Control at the “Device List”.

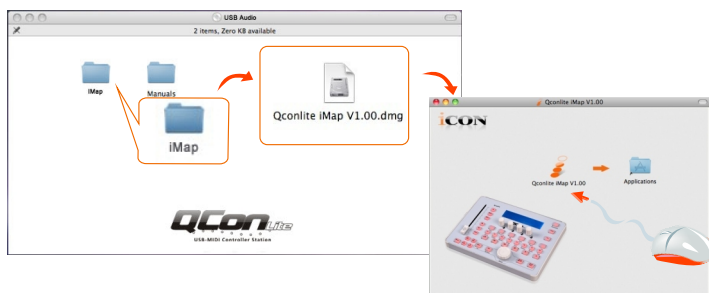
(Note: Every application does this a little different, so refer to your software user manual for the settings.)



Installing iMap™ Software for MAC OS X

Please follow the procedures below step-by-step to install your iMap™ software to Mac OS X

- ① **Insert the Utility CD in your CD-Rom and double click "Qcon Lite iMap" icon.**



Tips: By "drag and drop" the "Qcon Lite iMap" icon into the "Applications" folder, you could create a "iMap" shortcut on your Mac's desktop.

Installing iMap™ Software for Windows

Please follow the procedures below step-by-step to install your iMap™ software.

- ① **Turn on your PC.**
- ② **Insert the Utility CD in your CD-Rom**

After you have inserted the CD into your CD-Rom, an installation screen should appear as shown in diagram 1; click "iMap" installation".

(Note: If the installation screen not appear automatically go to the CD folder and double click on "Setup")



Diagram 1

- ③ **Setup Wizard appear**

Setup wizard appears, please click "Next"



Diagram 2

④ Choose Install Location

Choose your preferred install location for iMap™ or use the default location and click "Next"

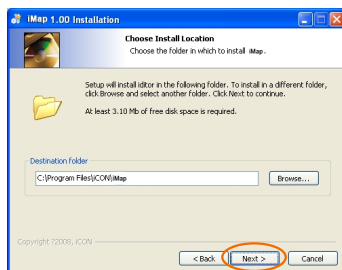


Diagram 3

⑤ Select shortcut

Select the start menu folder in which you would like to create the iMap™ shortcut. Then click "Next"

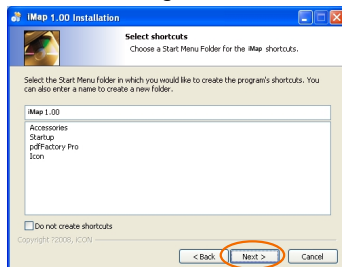


Diagram 4

⑥ Create a shortcut on your desktop

Please untick the box if you do not want to place a shortcut icon on your desktop for iMap™, otherwise click "Next"

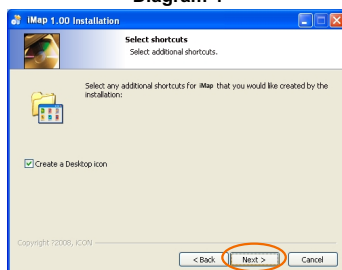


Diagram 5

⑦ iMap™ started to install

The iMap™ installation has now started, wait for it to finish. Then click "Finish"

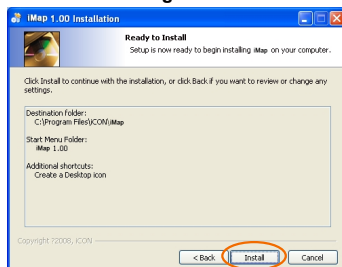


Diagram 6

⑧ Installation finished

Click "Finish" to complete the iMap™ software installation.

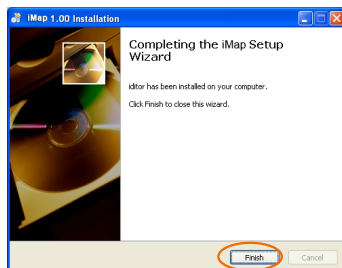


Diagram 7

Assigning MIDI functions with iMap™

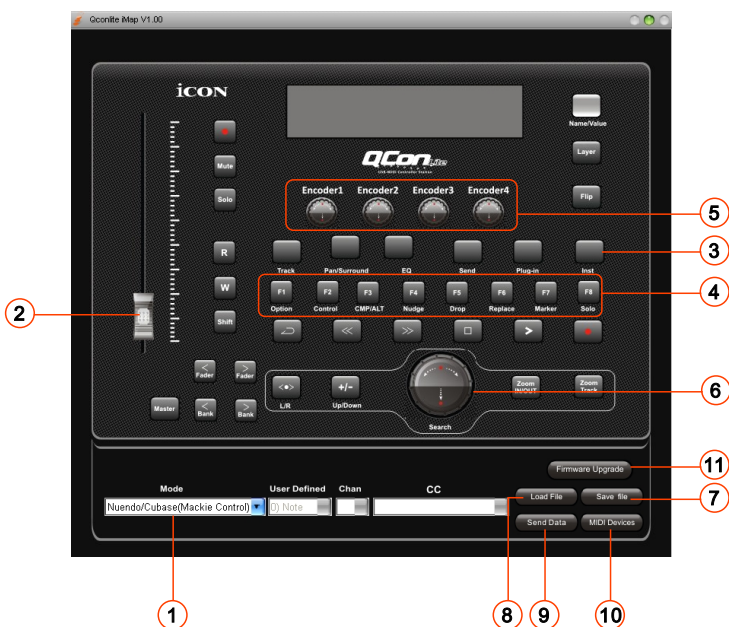
You can use iMap™ to assign the MIDI functions of your Qcon Lite easily.

Note: If your Qcon Lite is not connected to your Mac/PC, a message of "There are no MIDI input devices" will appear. Please connect Qcon Lite to your Mac/PC with the provided USB cable.



Qcon Lite
USB-MIDI Controller Station

iMap™ Qcon Lite software panel



① Mode selector

Select the Mackie Control/HUI mode according to your DAW or User Defined mode for self midi assignment from the pull-down menu.

Tip: Select User Defined mode for self midi mapping. Or use Mackie Control/HUI mode for convenient setup. Depending on your selected DAW Mackie Control mode, some allow you to change the function of F1-F8.

② Assign MIDI functions to the fader (User define mode only)

Select your desired MIDI functions for the fader.

③ Assign MIDI functions to the control buttons (User define mode only)

Select your desired MIDI functions for the control button.

④ **Assign MIDI function to the F1-F8 buttons**

Select your desired MIDI functions for the F1-F8 buttons.

Note: Some DAW Mackie Control (such as Live) & HUI modes do not allow you to change the F1-F8 button functions.

⑤ **Assign MIDI functions to the knobs (User define mode only)**

Select your desired MIDI functions for the knob.

⑥ **Assign MIDI functions to the Jog wheel (User define mode only)**

Select your desired MIDI functions for the jog wheel

⑦ **“Save file” button**

Click this button to save your current settings for the Qcon Lite. The file is an “.qconlite” file.

⑧ **“Load file” button**

Click this button to load a previously saved “. qconlite” setting file for your Qcon Lite.

⑨ **“Send Data” button**

Click this button to upload the iMap™ software settings to your Qcon Lite via USB connection.

(Note: You must have connected your Qcon Lite to your Mac/PC, otherwise the settings upload will not be successful.)

⑩ **“MIDI Devices” button**

Click this button, a MIDI device select window will appear as shown in diagram 1. Please select “ICON Qcon Lite” for the MIDI Out Devices.

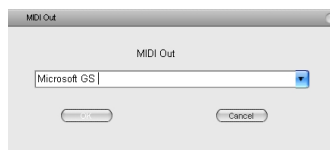


Diagram 1

⑪ **“Firmware Upgrade” button**

Click this button to enter into the firmware upgrade window for Qcon Lite. Please refer to P.11 for the firmware upgrade procedure.

Firmware upgrade



Diagram 1

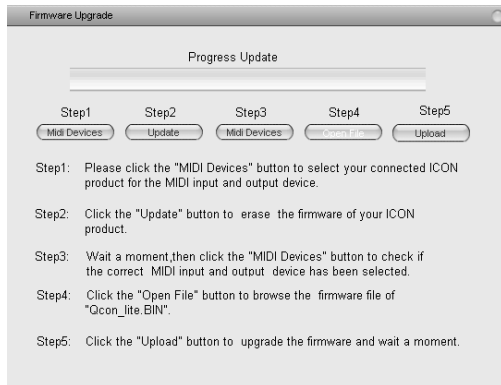


Diagram 2

Step 1: Connect the ICON product using a USB connection. Press the "MIDI Device" button at the top to select your connected ICON product as the "MIDI In and Out" device at the pull-down menu.

Note: If your connected ICON product model name does not appear on the pull-down menu, select "USB Audio" as the MIDI In and Out device.

Step 2: Click the "Update" button.

Step 3: Press the "MIDI Device" button at the top to select your connected ICON product as the "MIDI In and Out" device at the pull-down menu.

Step 4: Click the "Open File" button to browse the new firmware file.

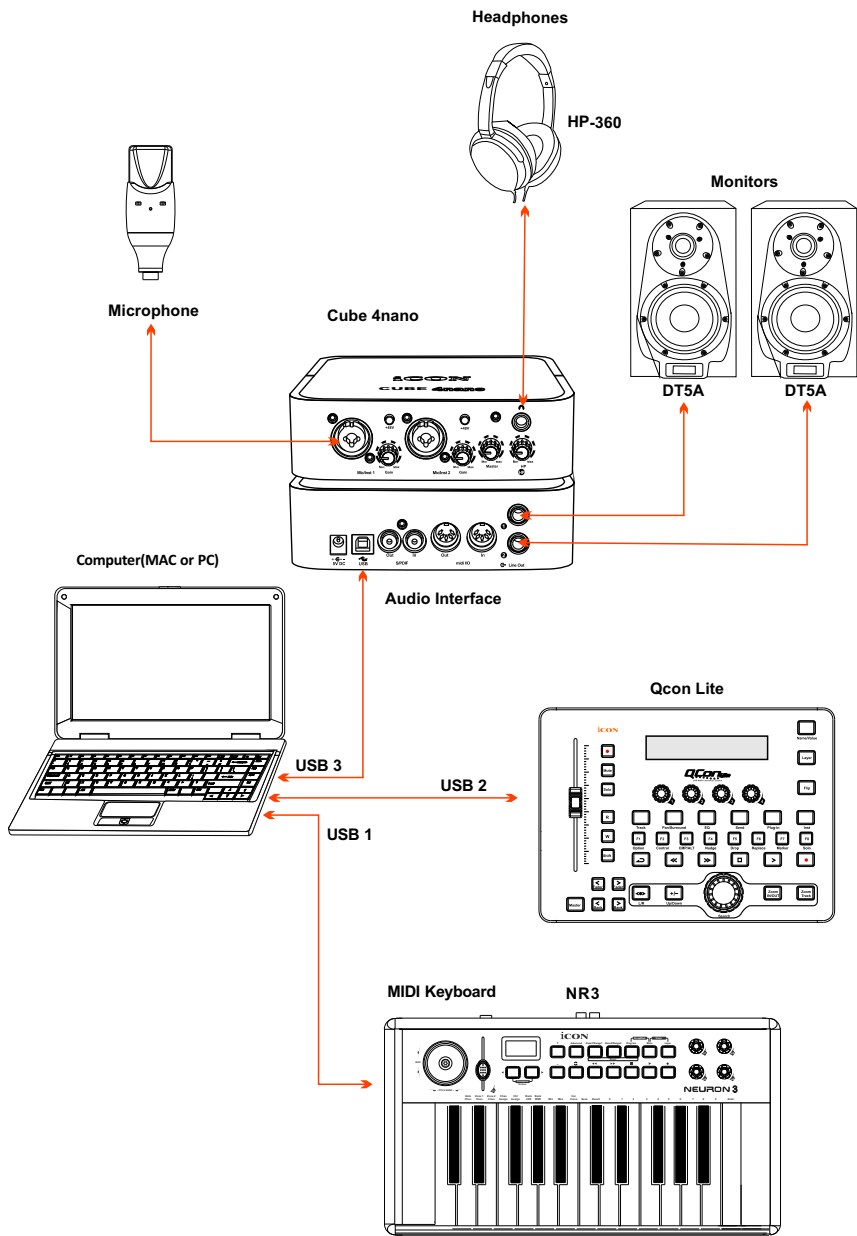
Step 5: Click the "Upload" button to upload the firmware.

Warning: The firmware upload process "MUST" be completed and not be interrupted during the file uploading, otherwise the firmware may not be rewritten again.

Restore the factory default settings

To restore your Qcon Lite settings to factory default, simply import the "Factory Default" setting file into your Qcon Lite with the original setting of the iMap software.

Connections



Specifications



Connector:	USB connector (standard type)
Power supply:	12V/6A DC
Current consumption:	3A or less
Weight:	0.9g (2.0lb)
Dimensions:	248(L) X 179(W) X 26(H) 9.8”(L) x 7.0”(W) x 1.0”(H)

Services

If your Qcon Lite needs servicing, follow these instructions.

1. Ensure the problem is not related to operation error or external system devices.
2. Keep this owner's manual. We don't need it to repair the unit.
3. Pack the unit in its original packaging including end card and box. This is very important. If you have lost the packaging, please make sure you have packed the unit properly. ICON is not responsible for any damage that occurs due to non-factory packing.
4. Ship to the ICON tech support center or the local return authorization.

U.S. OFFICE:

ICON Digital Corporation
8001 Terrace Ave., Suite 201
Middleton, WI, 53562
USA

ASIA OFFICE:

ICON (Asia) Corp.
Unit 807-810, 8/F., Sunley Centre,
No. 9 Wing Yin Street, Kwai Chung, NT.,
Hong Kong.

5. For additional update information please visit our website at:
www.icon-global.com



iCON®
www.icon-global.com
info@icon-global.com

